

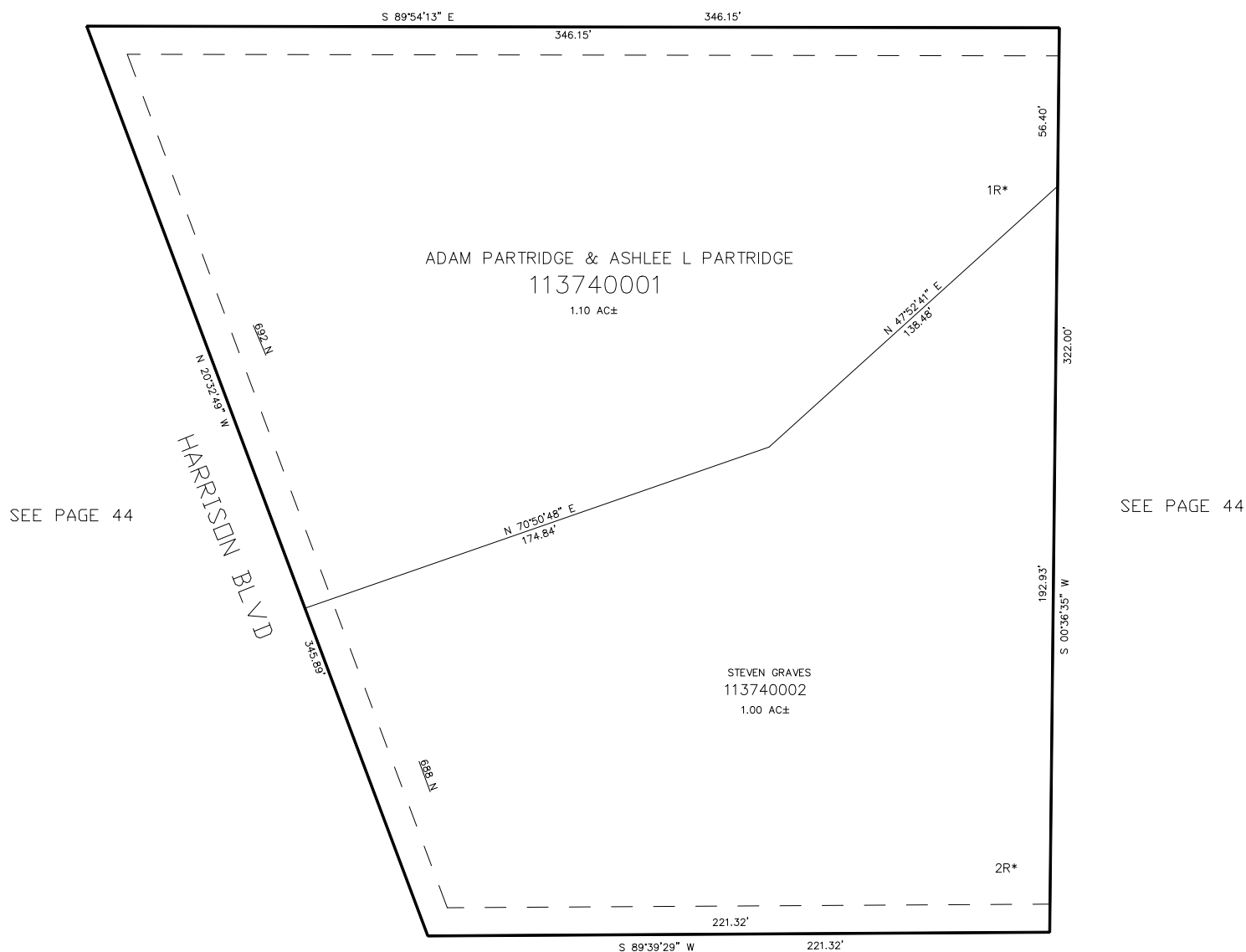
IN OGDEN CITY

SCALE 1" = 30'

TAXING UNIT: 25

SEE PAGE 44

* FOR ALL OTHER EASEMENTS, SENSITIVE AREA, FLOOD CHANNEL, FAULT ZONE, AND PRIVATE DRIVEWAY SEE DED. PLAT



10' UTILITY & DRAINAGE EASEMENTS EACH
SIDE OF PROPERTY LINES AS INDICATED
BY DASHED LINES EXCEPT AS OTHERWISE
SHOWN.

FOR COMPLETE ENG DATA SEE
ORIGINAL DEDICATION PLAT IN
BOOK 64, PAGE 84 OF RECORDS.